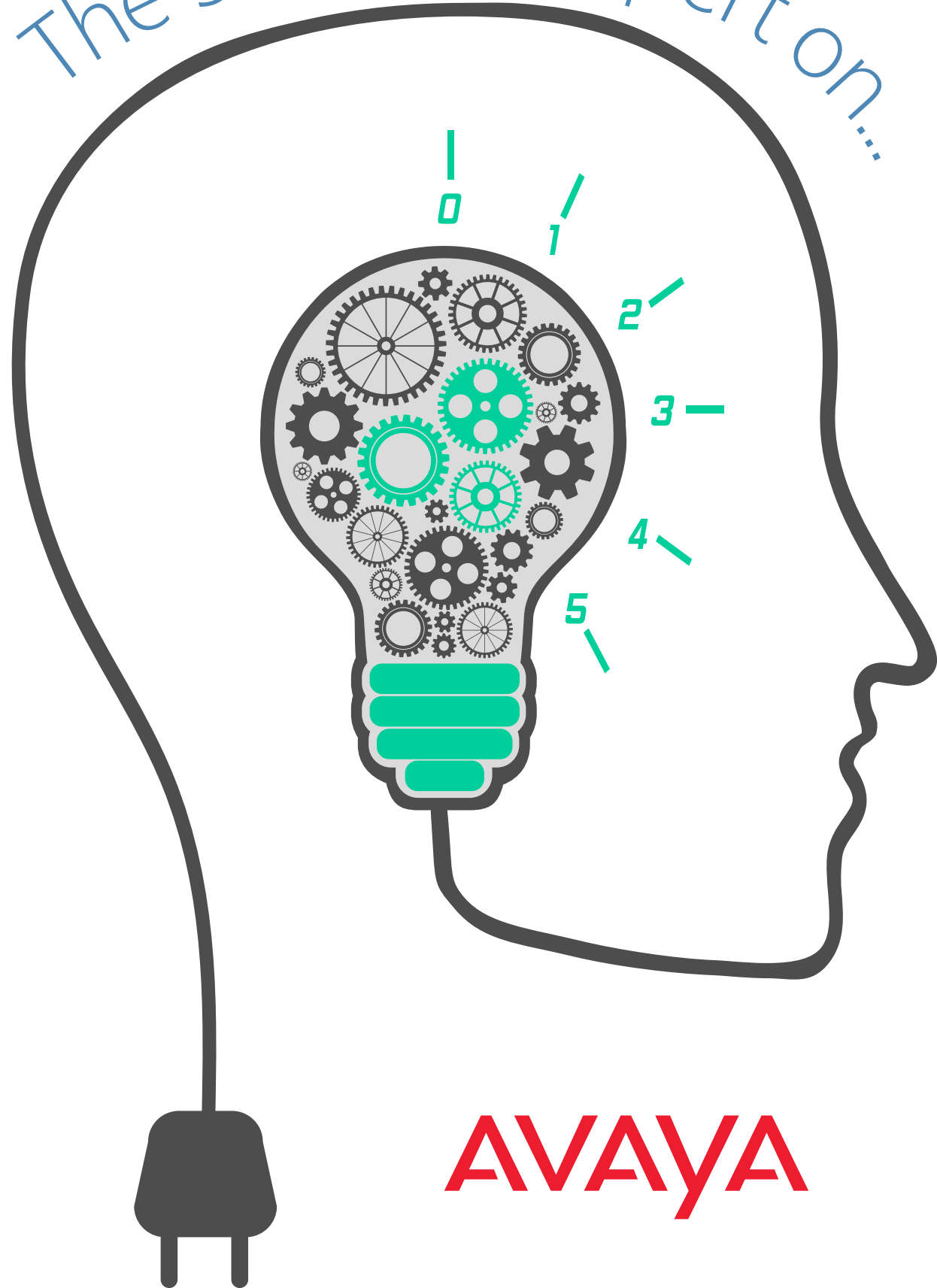
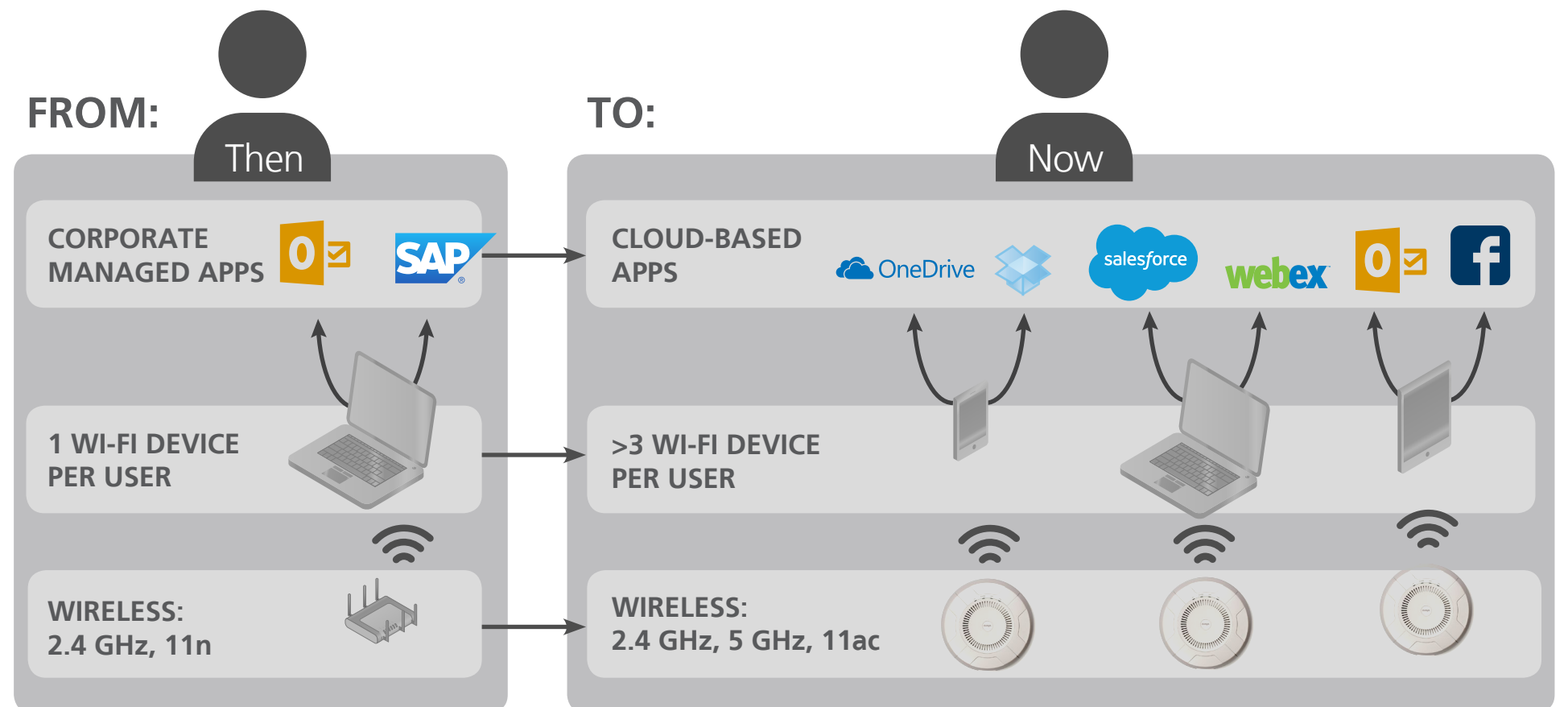


The 5 Minute Expert on...



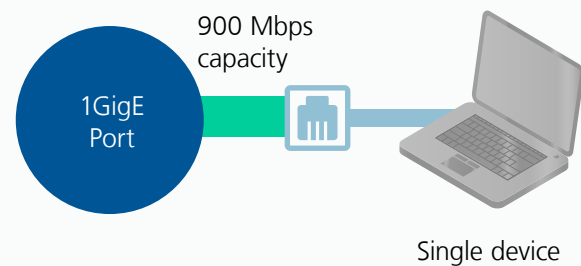
## Avaya WLAN 9100 Series

The Avaya WLAN 9100 Series is an **'application-first' wireless solution**. It not only delivers wire-like performance and predictability - essential for a high quality experience - but also supports application-level control to ensure that business critical applications come first.



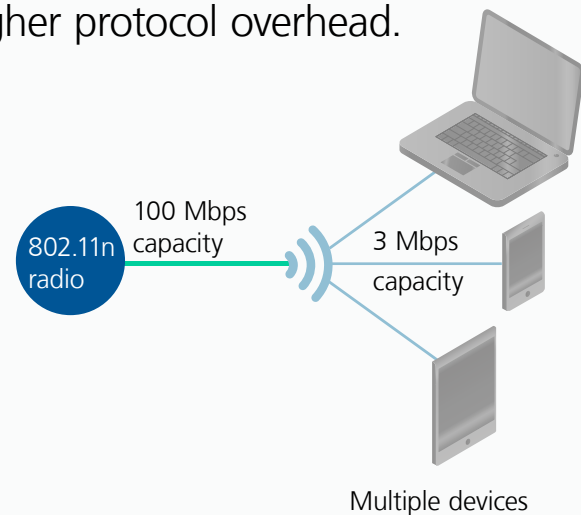
## WHY DELIVERING A PREDICTABLE WIRELESS PERFORMANCE IS IMPORTANT...

### WIRED



### VS WIRELESS

Wired performance is challenging to achieve with Wireless Access, which is shared and has a higher protocol overhead.



## THE BENEFITS OF AVAYA WLAN 9100 SERIES:

### APPLICATION CONTROL

- Visibility and policy control at the edge for predictable application performance
- Prioritisation of critical apps (Scopia video, SAP, Oracle, Exchange)

### SIMPLIFIED OPERATIONS

- Zero touch provisioning
- Enable new equipment via automated online activation
- On-premise & cloud management deployment options

### BROAD PORTFOLIO

- Supports the latest industry standards (802.11ac)
- Broad portfolio to support density needs

### FUTURE-PROOF NETWORK

Technology upgrade path to 802.11ac and other wireless technologies without replacing any equipment

### END-TO-END UNIFIED ACCESS

- Unified wired/wireless,
- BYOD
- Guest Access management
- Unified management

### PREDICTABLE PERFORMANCE

Extends the benefits and simplicity of Avaya's innovative Fabric technology to the wireless edge



## NEXT-GEN WIRELESS WITH PREDICTABLE PERFORMANCE:

- 802.11ac
- Simplified RF planning
- Application QoS control
- BYOD/Guest access
- 2-Tier architecture with distributed controller
- Swap-less upgrades
- Cloud-based management
- End-to-End Unified Access
- Flexible deployment
- Low TCO
- Bonjour support

## PERFECT FOR SCOPIA CALLS

New to R7.2, enhancements to application control allow users to prioritise video & collaboration applications over other applications.

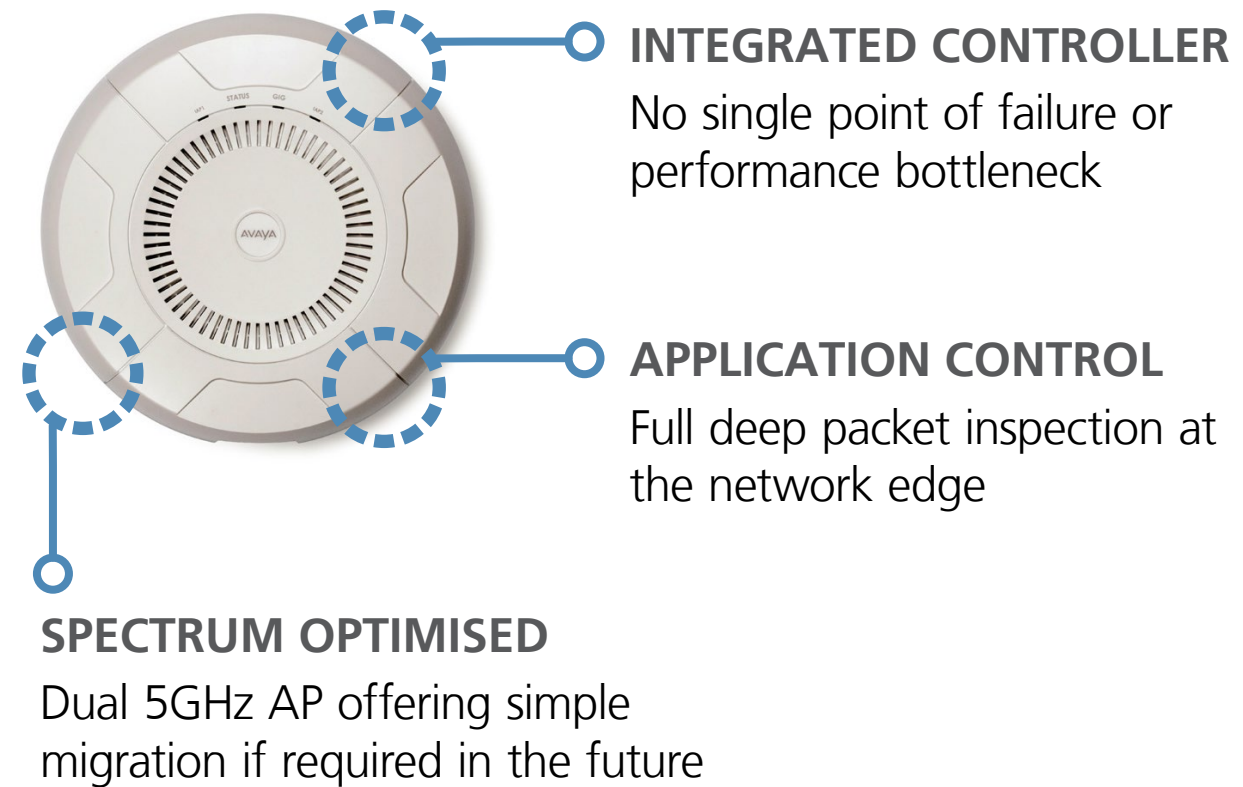


## WLAN ACCESS POINTS (APs):

A range of **indoor and outdoor 802.11n/ac access points** catering to different deployment requirements:

WAP 9122	WAP 9123	WAP 9132	WAP 9133	WAO 9122 (outdoor)	WAP 9172/9173
802.11n	802.11n	802.11ac	802.11ac	802.11n	802.11ac
2x2 AP	3x3 AP	2x2 AP	3x3 AP	2x2 AP	2x2 AP / 3x3 AP
2 radios	2 radios	2 radios	2 radios	2 radios	4 radios

## HIGH END FEATURES AVAILABLE WITH ALL APs:



# WLAN ORCHESTRATION SYSTEM

This fully featured orchestration system enables administrators to perform **pre- and post-deployment planning, configuration, verification, management and optimisation** of the 9100 Series infrastructure.

- Configuration and policy management
- Performance monitoring
- Reporting and analytics
- Security monitoring
- Troubleshooting
- Flexible deployment options
  - On-premise appliance
  - On-premise software
  - Virtualised option
  - Cloud management



WIRELESS HEAT MAPS



# AVAYA IDENTITY ENGINES

Although not a mandatory component of a 9100 WLAN deployment, Avaya Identity Engines provide an **opportunity to cross-sell** another part of the Avaya portfolio. As BYOD continues to drive usage and complexity, IT managers need to have **visibility over network access**, but without limiting the flexibility and value BYOD delivers for anytime, anywhere collaboration.

- Simple yet powerful identity-based policy engine supporting BYOD security
- Truly unifies wired and wireless access
- Vendor agnostic
- Federated identity across all major directories
- Any type of network (wired, wireless, VPN)
- Any user (employee, business partner, guest)
- Simple and affordable licensing model
- Guest deployment in <10s

▶ Play video

